

Parkheath

Sold on Service

Sumatra Road NW6

£1,850 PCM (£427 per week) - Camden Band C



1 bedroom first floor apartment

Reception room with wooden floors

Open plan fitted kitchen

Double bedroom

0.5 miles to West Hampstead underground station

Within small private building

Private balcony/terrace

Bathroom/WC

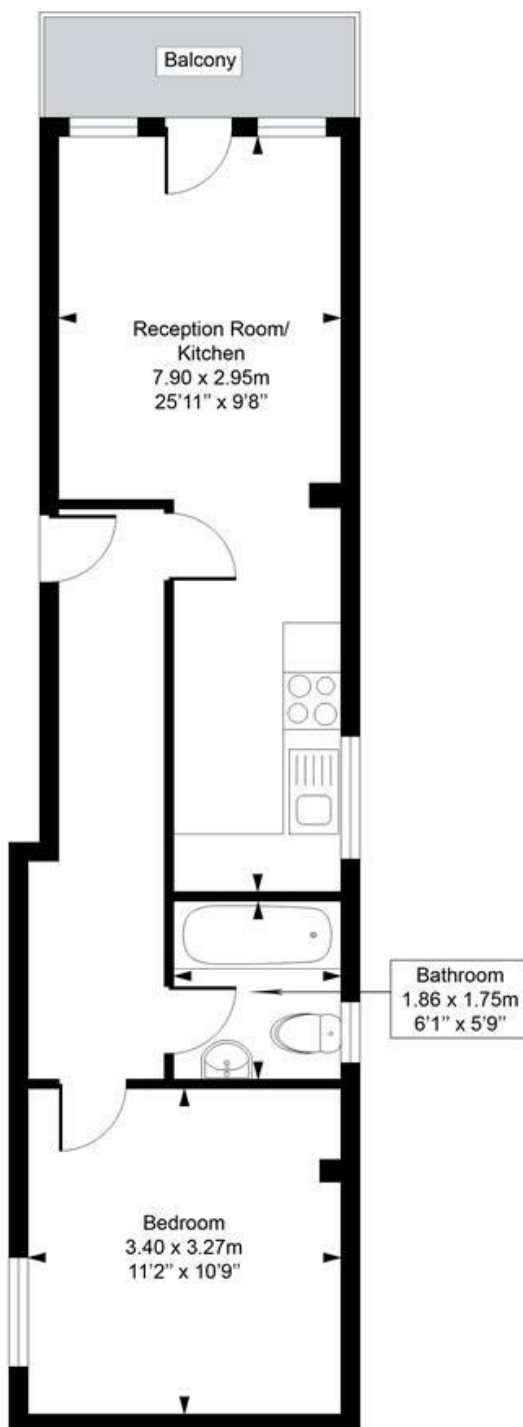
Situated just off Mill Lane

EPC: Rating: C, Council Tax: Camden band C

West Hampstead Office 020 7794 7111

Sumatra Road

Approximate Gross Internal Area = 41.3 Sq m / 444 sq ft



Measured in accordance with RICS guidelines. Every attempt is made to ensure accuracy

However all measurements are approximate.

The floor plan is illustrative purposes only and is not to scale

ELLIE CLAIRE PHOTOGRAPHY LTD

www.ellieclairephotography.com

The particulars do not constitute part of an offer or contract. The particulars, including text, photographs and plans, are for the guidance only of prospective purchasers/tenants and must not be relied upon as statements of fact. The descriptions provided therein represent the opinion of the author and whilst given in good faith should not be construed as statements of fact. Nothing in these particulars shall be deemed a statement that the property is in good condition or otherwise or that any services or facilities are in good working order. All measurements are approximate